

The World of Labeling - A Perfect System



Labels/die-cut parts



Thermal printing systems



Labeling systems



CCL Design Stuttgart GmbH

Carl-Benz-Strasse 4
71154 Nufringen
Phone : +49 7032 9561 - 0
Fax: +49 7032 9561 - 271
eMail: STUinfo@cclind.com



www.ccl-design-stuttgart.com



LAMINATORS

Labeling

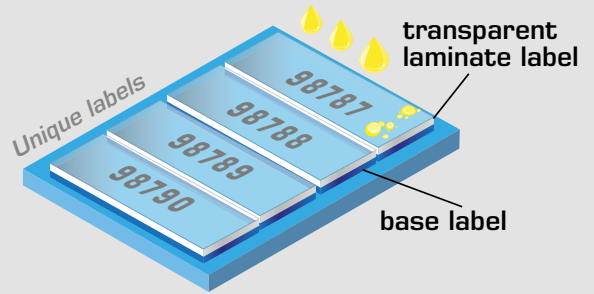
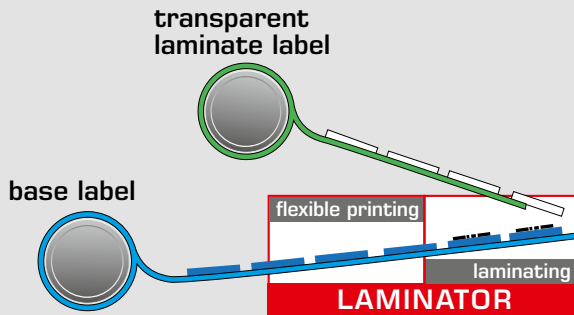
Build
your
layers



Generate
labels for
the highest
standards



HOW IT WORKS:

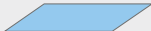



The construction of the label is extremely durable against outside influences

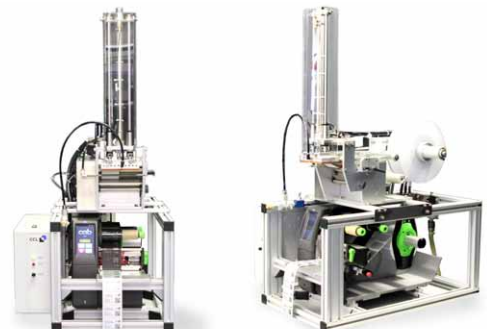
For Experts




Laminator PRO

- **Lamination tolerance:**
Up to ± 0.5 mm [0.02 in]
- **Laminat types:**
One layer laminate 
Multi layer laminate with pull tab 
- **Laminate sizes:**
Various laminate sizes can be used
- **Control:**
Flexible control unit with touchpanel

For Beginners



Laminator ECO

- **Lamination tolerance:**
Up to ± 1 mm [0.04 in]
- **Laminat types:**
One layer laminate 
- **Laminate sizes:**
Used for one laminate size
- **Control:**
Simple control unit without input panel