

The World of Labeling - A Perfect System



Labels/die-cut parts



Thermal printing systems



Labeling systems

We develop and produce high quality nameplates, self-adhesive and security type labels for technical industries according to IATF 16949 (includes ISO 9001). In addition to durable labels, we also offer tailor-made print and apply systems. This ensures system solutions from one source. Experience and technical know-how have enabled us to label difficult substrates automatically and permanently. Turn our knowledge into your profit!

- Nameplates
- Security labels
- Functional die-cut parts
- Labeling systems
- Thermal printing systems
- Barcode reading systems



www.ccl-design-stuttgart.com



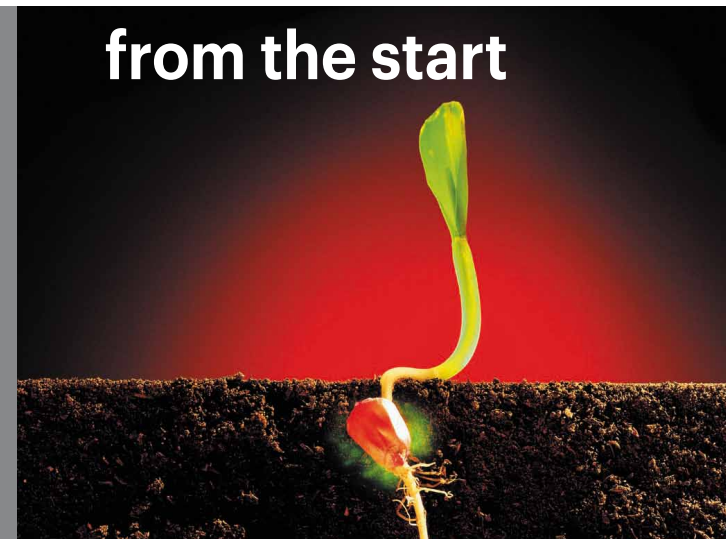
PAINT COVER



Identification from the start

Come Visit Us!

additional information under:



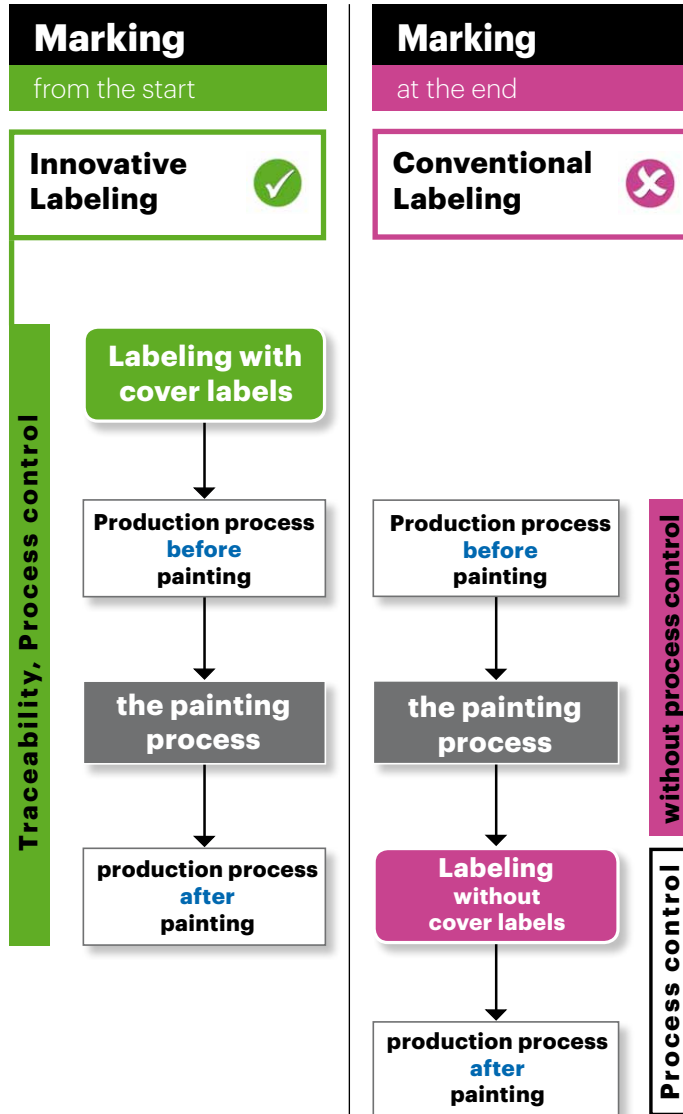
CCL Design Stuttgart GmbH

Carl-Benz-Strasse 4
71154 Nufringen
Phone: +49 7032 9561 - 0
Fax: +49 7032 9561 - 271
eMail: STUinfo@cclind.com



Paint Cover
labels

Efficient Flow



Use the advantages

- **Distinct identification and traceability**
- **Costs and time savings through early error detection**
- **Clean solution, easy adhesive bonding**
- **Optimize your production process**
- **Selection of a suitable base label according to customer requirements**
- **Variable and individual labeling using thermal transfer printing**

Product

- The label is embedded in the paint, thereby it is permanently connected to the component
- Multilayer film bond with an integrated gripping tab
- A stable gripping tab facilitates the safe removal of the paint cover label
- Highest weather and chemical resistance
- Extremely scratch resistant through residual protective laminate, the information is re-readable again
- Withstands critical temperature ranges

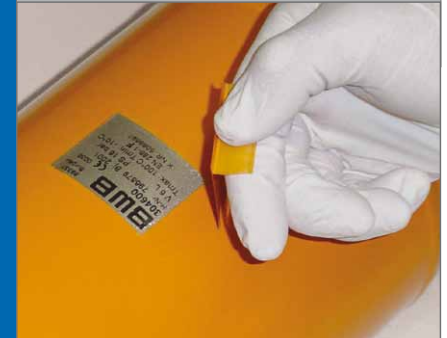
Unpainted



Painted



Pull off paint cover



Perfect paint cover application