

The World of Labeling - A Perfect System



Labels/die-cut parts



Thermal printing systems



Labeling systems

We develop and produce high quality nameplates, self-adhesive and security type labels for technical industries according to IATF 16949 (includes ISO 9001). In addition to durable labels, we also offer tailor-made print and apply systems. This ensures system solutions from one source. Experience and technical know-how have enabled us to label difficult substrates automatically and permanently. Turn our knowledge into your profit!

- Nameplates
- Security labels
- Functional die-cut parts
- Labeling systems
- Thermal printing systems
- Barcode reading systems



www.ccl-design-stuttgart.com



SUPER ADHESION

Identification for the extreme

Come Visit Us!

additional information under:



CCL Design Stuttgart GmbH

Carl-Benz-Strasse 4
71154 Nufringen
Phone: +49 7032 9561 - 0
Fax: +49 7032 9561 - 271
eMail: STUinfo@cclind.com



Labels with
high adhesion
strength



Efficient Flow

Marking

with our label

Innovative identification ✓

Preparation of self-adhesive material and printing system

All symbols plus barcode/2D matrix code

Individual label print via thermal transfer print

Fast application of nameplate as self-adhesive label

Marked product

Modern Identification - adhesion

Marking

with manual rivets

Konventionelle Kennzeichnung ✗

Preparation of metal plate and embossing system

Only numbers and digits

Costly compilation of information for embossing

Additional costs by manually applying rivets

Marked product

Old fashioned Identification - rivets

Stick it, don't rivet

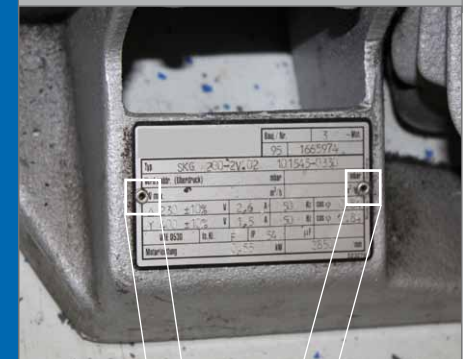
Use the advantages

- **Cost and time savings through a central label production**
- **Free choice of label dimensions**
- **Inclusion of barcodes/2D matrix codes**
- **Free creativity with label design**
- **Use of flexible self-adhesive materials**
- **Fast application of labels**
- **Costly application of rigid metal nameplates can be discontinued**

Product

- Multitude of product variables are available; selection of a suitable adhesive will be based on your requirements
- High grade adhesive materials offer excellent weathering and chemical resistancies
- Suitable also for structured plastic substrates
- Imprinting with all common print systems
- Preprinted labels enhance label quality
- Corrosion protection and weight savings
- Optional protective laminate for highest mechanical resistancies

Embossed nameplate - riveted



Printed Polyester film - adhered



Stick it, don't rivet

Excellent adhesion on textured substrates