

Joined together in one building

Perfect conditions for future growth



Due to continuously good marketing of our products, and their great innovation potential, our previous site in Ehningen had reached its space limits in recent years. In the past, for this reason, individual divisions were separated into various buildings to meet the increasing market demand. Thus the entire raw materials storage, final inspection and the labeling division were located in another part of town ("Im Letten"), at the company's headquarters in Ehningen. Because these solutions were inefficient and unsatisfactory for the long term, we were already looking for alternatives before the takeover by CCL

Industries in 2016.

At first, everything was focused on an extension on 'Waldstrasse' road. However, initial plans and cost considerations showed that an extension on

the existing building wouldn't bring the results we wanted. The CCL-Group management also didn't see this plan as viable. A future-oriented solution was needed. For a little while, the plan was on ice until November 2017, when an employee informed the company management to a complex of buildings in Nufringen. At first, this building was considered too big, but upon initial examination, it quickly became obvious that it was practically predestined for CCL and its needs. This initial evaluation launched various rounds of planning, and after a short discovery phase, the initiative was presented to group management in Solingen. With a promising presentation to Peter Fleissner and Geoffrey T. Martin — who was



Ralph Siegmund

Uwe Dessecker

Dear customers and partners,

Welcome to the new CCL plant in Nufringen! In this edition of ACCTuel, we are pleased to introduce our forward-looking investment in the future of CCL Design Stuttgart. This step combines the opportunity for new growth with the innovative products that you have come to know and value over decades.

When it comes to work-life balance, this step was important for the wellbeing of our employees — from now on, under one roof, their paths are short and their communication more intensive. For the smooth relocation, we would like to thank all employees, because only with their

energetic help and support could we succeed so brilliantly at this demanding task in such a short time.

Even though not all divisions have completely moved yet, after a short settling-in phase, we can say that our company has successfully arrived at our new location. Now our whole energy will go into further expansion and growth for our division with proven, innovative labeling solutions.

We are looking forward to a continued successful and trusting cooperation in many different projects.



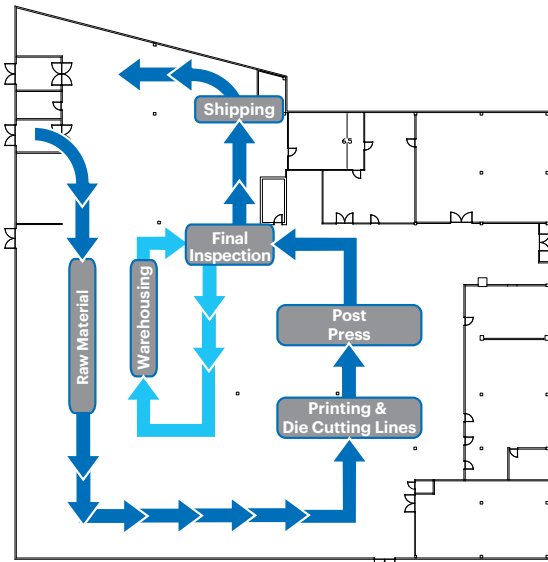
on a tour of Europe at that time — the group's executives finally gave their OK in February 2018. This cleared the way to purchase the building, which happened quickly with the notarized purchase agreement and official handover on April 26, 2018. In the meantime, plans were drawn up for the tradesmen, and conversion started just one day after handover — April 27, 2018.

A building for everyone's preference

The new building offers everything that makes a modern company stand out. It's not far from the previous site in Ehningen, so that the staff have no problem switching locations. In addition to the accustomed comfort, there is plenty of parking for both visitors and employees. On about 7500 m², the perfectly located site has more than enough space for the whole CCL team. And lastly, all departments are in one

building, and there is room for growth. Production is housed on just one level, so optimal workflow can be realized without superfluous intersections and overlaps. Transport between the two sites — Im Letten and Waldstrasse — is now history. Administration occupies the front of the building. Many of the office workstations have been equipped with modern height-adjustable desks. Working at a desk adjustable for sitting and standing helps prevent back and neck pain.

Between the two parts of the building is the common cafeteria, which houses, among other things, a lounge area for communication with colleagues and visitors. Connected to this area is a



separable conference or meeting room with the latest technology, so that large events or celebrations can take place on the company's own premises.

Everything is blue, right from the start

An important aspect of the final decision on the property was that it appeals to employees and customers alike. The very first impression with the blue exterior giving way to a blue interior was a small preliminary decision. The whole CCL team will be able to enjoy a pleasant work environment that they can identify with and best develop in. ■



PUBLISHER INFO

Publisher: CCL Design Stuttgart GmbH
www.ccl-design-stuttgart.com
 Editors: Franz Schmiedecker
 Issue: November 2018



Sizes keep getting smaller

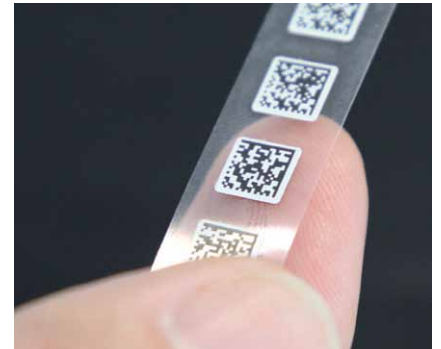
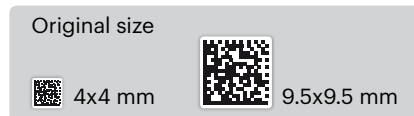
Marking circuit boards with high-temperature labels

Product development has made the surfaces available for labeling smaller and smaller. This means the label sizes must also get smaller. Here, traditional adhesive labeling methods using simple designations like DMCs (data matrix codes) or barcodes reach their limits. Because if the surface is too small, their adhesive strength is no longer

adequate. Our high-temperature-resistant material makes marking even the smallest surfaces reliable. It easily withstands the temperatures in reflow and wave soldering processes.

Our standard range in this field starts at 4x4 mm and is available to sizes of 9.5x9.5 mm.

For printing individual labels, we offer resolution of 600 dpi. This provides high print quality for identifying components and circuit boards — even with large amounts of data. In addition to the standard range, we naturally offer custom sizes based on individual customer requirements. ■



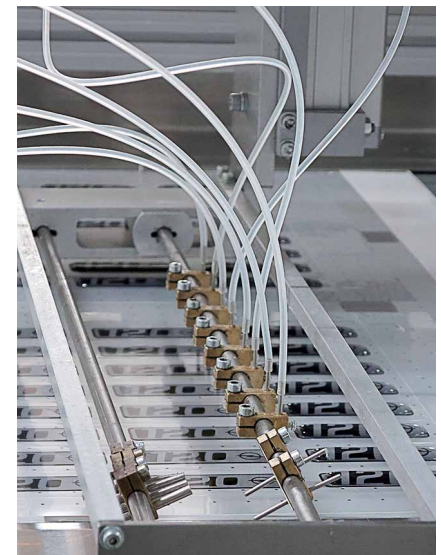
Eye-catching labels to last forever

A special surface coating makes labels unique

With their resin seal, self-adhesive DOM labels — also called 3D labels — are protected from moisture and extreme temperatures. This makes them highly suitable for both inside and outside use. Moreover, the labels are largely resistant to various chemical substances, and their stability allows use in many fields, such as car advertising, furniture and electronic devices.

The finished product stands out visually and tactilely; so besides its practical use, it is valuable for catching the eye

of end customers. 3D labels effectively increase your company's visibility. When needed, we produce 3D labels with extreme instant adhesive strength. These DOM labels are designed for complex substrates and adhesion at low temperatures. They can be printed by flexographic, silkscreen or digital processes. After printing, they are coated with a special resin, which is applied by our CCL colleagues in Solingen. Used with a high-performance film, they last a long time and have outstanding UV and weather resistance. This makes custom-prepared 3D labels suitable for special requirements. ■



New models in thermal transfer printing

Announcements directly from the manufacturer

Every product's time is limited, and even manufacturers of thermal transfer printers are always culling their product lines. Technical progress generally makes more effective successors available, so previous products are removed from the portfolio. This year, the manufacturers SATO and Zebra have announced discontinuation of various models, and here we present their successor models:

Zebra End of Life - Products:

ZM400 / 105SLPlus / Xi4

Zebra ZT600 replaces Zebra Xi4

With the new ZT series, Zebra is rebuilding its line of industrial printers. The Xi series is being revamped with the ZT600 series, combining robustness with outstanding performance and a user-friendly, future-proof platform. These next-generation work machines have been designed to help you find your way in the fast-developing business world. This means that, regardless of whether it's the growing demands of the production line, the increasing complexity of operation, integration of different types of systems, or increasing investment costs, the ZT series will have you ready now and in the future. ■



Old model	New model
ZM400	ZT400
105SLPlus	ZT500
Xi4	ZT600

SATO End of Life - Products:

CL4e series / CL6e series

GL4e series / GT4e series / GZ4e series

The revolutionary NX family of printers

With the NX series, SATO has come up with a worthy successor to a number of print models. The versatile NX series printers are the premium thermal printers the industry has been waiting for. They offer expanded usage technologies for barcode symbologies and character sets. With these smart product features, they offer real added value for high-end label printing. ■



Old model	New model
CL4e series	CL4NX
CL6e series	CL6NX
GL4e/GT4e/GZ4e	CL4NX

New desktop printer model:

A versatile desktop printer

The new WS4 series from SATO epitomizes appealing design, quality and comprehensive application possibilities. Featuring premium workmanship, the desktop printers are robust and provide plenty of internal space for consumable supplies. Available as a thermal direct or thermal transfer model with 203 dpi or 300 dpi print resolution. ■



In spring 2018, various project managers at SICK AG received a comprehensive look at the world of CCL at a TechDay on their site. SICK AG is one of the world's leading manufacturers of intelligent sensors and sensor solutions for manufacturing, logistics and process automation.

To start out, selected products already used at SICK were viewed again in detail. Then came instruction on several products and the use of various types of adhesives. Next, the focus was on distinguishing between the available TT color tapes in regard to durability and functionality.



Know how transferring

Through the integration of the Nuremberg plant, CCL Design Stuttgart could fully present its portfolio of face films for operating panels and displays, and initial questions on details could be clarified during the event.

At the end, the agenda included new products, such as labels with NFC technology from CCL colleagues at the Checkpoint division, which met with great interest. Altogether, TechDay was a successful event that will surely be continued in the future.

CCL Design Stuttgart changes its legal form

With the relocation, the CCL-Group has also initiated a change in legal form. It is changing from a joint stock company ("AG" in German) to a limited liability company ("GmbH"). The new CCL Design Stuttgart GmbH will assume all rights and responsibilities of the previous joint stock company. All current contracts and agreements remain valid. This conversion also changes our number in the commercial register, which is now: HRB 766856. The bank relationship, VAT ID number and D-U-N-S number remain the same.

NEW!
Commercial register number
HRB 766856

Same as before:
 VAT ID number
 DE 145 175 235

D-U-N-S number
 32-764-7418

Bank accounts

Innovative production system for high precision

Since 2017, plans have been in the works for identical manufacturing systems to increase flexibility and availability in production. Modern systems with servo machine drive provide ultimate precision.

The investment in two new systems was already a done deal before CCL relocated. These manufacturing systems were put right into operation at the new site. Both a new multi-function die cutting system and a UV flexographic printing machine with die cutting will immediately join the machinery at CCL Design Stuttgart.

Multi-function die cutting system

The multi-function die cutting system is designed to create composite materials, special die-cut parts, or also our paint protection film with a grip tab. The system can precisely die cut preprinted webs but has no printing unit of its own.



6-color UV flexographic printing system

With the UV flexographic printing system, the focus was on adding redundancy to our existing 6-color system. As always, it's about reliable product manufacturing. For this reason, the new system has the same components as its predecessor - just in a new style with new technology.



An important economic synergy effect for both systems was already considered in the planning phase — all tools can be used on both the new machines and our existing production systems. ■

Labeling systems division focussing on basics

Since 1999, the labeling division has been part of Wölco AG — today CCL Design Stuttgart. In recent years, their work has grown continuously to include comprehensive systems that partially exceeded our own core competencies. To get our old strength back, this expertise has become the center of our product range.

In the future, our focus will be on small dispensing and application systems, such as our laminator. But simple printing and application systems, such as our Lupo PA-36 will also be part of the portfolio. Important to the entire field of manufacturing machines will be our systems' use of labels we manufacture ourselves. With this, we plan to eliminate conflicts between label and machine manufacturers and place responsibility in a single set of hands.

In addition to the products themselves, services are an important part of the overall portfolio, especially replacement parts and maintenance. This allows damage to be spotted early and expensive repairs to be avoided. Our experienced service technicians offer fast on-site analysis and troubleshooting, so that operation is interrupted only briefly — or preferably not at all.

Product portfolio	
Printing systems <ul style="list-style-type: none"> • TT printer • Software • Programming • Integration 	Standard machines: <ul style="list-style-type: none"> • Printing and lamination • Dispensing • Dispensing and application • Printing and application
Services: <ul style="list-style-type: none"> • Replacement parts for systems • Replacement parts for printing systems • Repairs • Maintenance 	Additional services: <ul style="list-style-type: none"> • Extension to standard system • Transfer systems • Handling technology • Security technology • Inspection and identification

PSA-Material with holograms and VOID

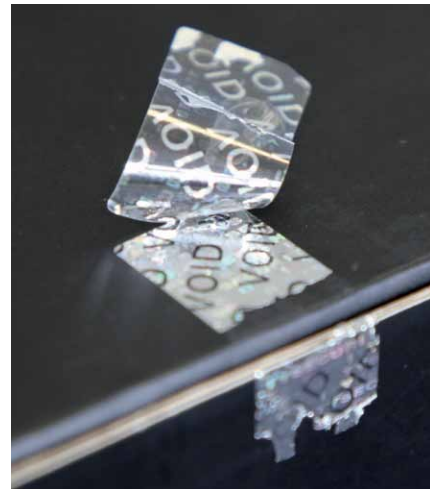
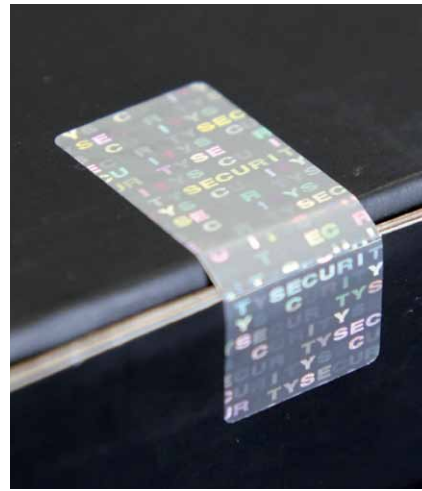
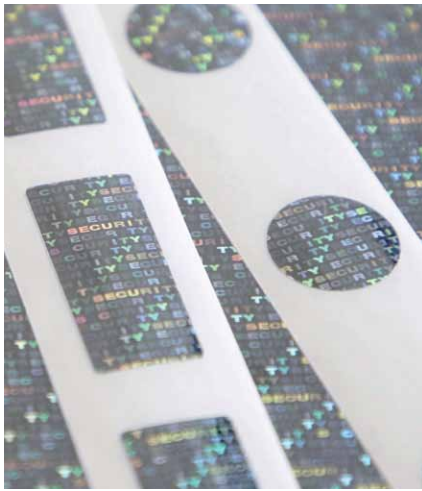
Two-level security label for special cases

This impressive label is transparent and gives off fascinating holographic effects when light hits it. The pressure-sensitive-adhesive material can be inscribed and thus adapted to customer needs with individual printing. As a seal for opening security on products, it is both classy and effective.

Like all hologram labels, the label is highly suitable for smooth surfaces. If someone attempts to remove it without authorization, it self-destructs and leaves the word "VOID" on the product. If necessary, like the residues of adhesive strips, this can easily be removed with an ordinary solvent. ■



Request sample materials. We'll be happy to advise you!



CCL's Oscar for successful operational integration



Every year, CCL Industries issues various awards to a selected group of its 160 internal companies for outstanding performance. We are proud to announce that CCL Design Stuttgart received an award at this year's group-wide CCL Management Meeting in Thailand in March of this year.

As part of the 2017 CCL Oscar Awards, Uwe Dessecker was honored for the integration of Fritz Brunnhöfer GmbH into CCL Design Stuttgart.

Mr. Dessecker received the award on behalf of everyone who worked on this project.

We take this opportunity to warmly thank all those involved for their commitment. Their performance and dedication contributed to our receiving this CCL Oscar Award. ■